

Inspection Management System



Inspection – Healthcare for the Static Equipment

It becomes all the more important to evolve strategies for planned execution & monitoring of non-destructive tests on static Equipment in order to achieve greater availability as well as establish statutory norms.

Corrosion & Inspection Management is the basis of determining the health of the static equipment so as to have a considerable '**IMPACT**' on the productivity & efficiency of the plant.

CIMS- The low cost, total solution for Static Equipment

Inspection systems forms as a vertical which can be integrated to other popular Asset Management software.

The CIMS Edge

- Better Scheduling of Inspection jobs
- Better Availability, Reliability and Maintainability
- Increased Profitability
- Reducing Maintenance cycle times
- Efficient on-line work planning
- Empowering the decision making process by 'information' availability anytime anywhere
- Adhering to Operational and Environmental safety standards

Deriving optimum benefits across the value chain by integrating all functional and business processes

Key features

- Manage Static equipment like Pressure vessels, Tanks,
- Relief valves, Heat exchangers, Pipelines etc.
- Capture thickness details
- Monitor Tube plugging details of Heat exchangers
- Configurable technical parameters
- Calculate short term and long term corrosion rates and residual life for the equipment based upon the trend in deterioration of the thickness and the retirement thickness.
- Multi level security

Basic System

Master Database

This is an exhaustive information of the Static equipment & required master information that are available in the plant viz.

- Help build an exhaustive commercial / technical specifications, engineering drawings etc.
- Define welder Master & Welder qualification
- Corrosion Coupons
- User details & profiles
- Other codes like Inspection types, Classification types, Pending reasons etc.
- Cathodic Protection details



Inspection Procedures

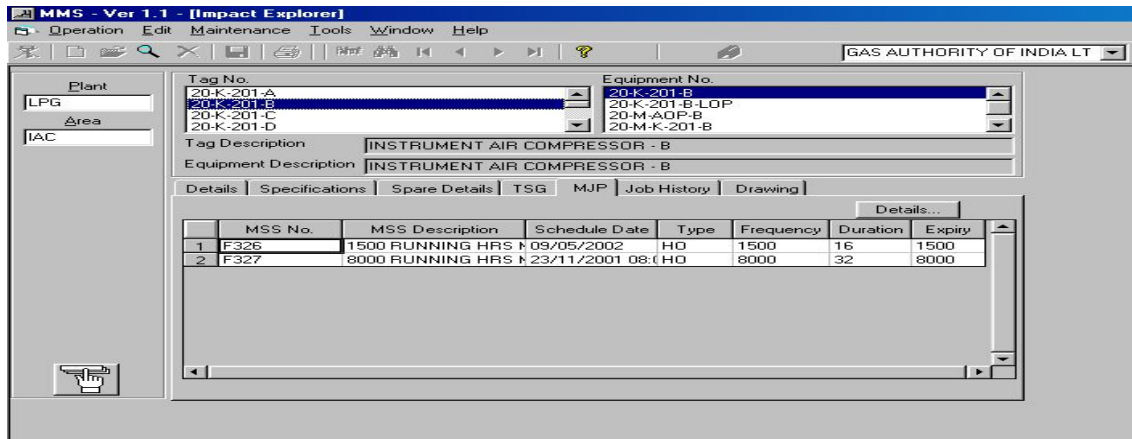
The basis on which inspections are carried out and also captures the procedures for the inspection type's viz. Radiography, Magnetic particle examination, Dye penetrated test, Ultrasonic test & Welding procedures.

Work Order

Routine Inspection work orders can be generated through this option and the planned work orders will be either from the CMMS to which CIMS is interface or from IMPACT our own CMMS product.

Corrosion Coupon

This method of Inspection is used to check for corrosion in pipelines. The same material as that of the pipeline is kept and is checked periodically for weight loss. Depending on the weight loss the corrosion is determined to enable decision making in changing the pipeline.



Work orders can be viewed for load and history can be captured. Based on the type of equipment tube plugging or set pressure or re-set pressure details or thickness details along with observation, analysis, and recommendation are recorded.



This product can be interfaced with other Asset Management software to trigger scheduled Inspection requests as well as send feedback on Inspection

Such an interface already provided for SAP in one of our Client installation.

Cathodic Protection

This transaction is used to identify leakage in underground pipelines.

Welding

Welding inspection requirement as well as the results of inspection are recorded

Architecture : Client Server

RDBMS : ORACLE

OS : Unix / NT / Windows

GUI : VB6